

PRECAUTIONARY CALL FOR RETROFIT TREE CARE HARNESSSES

EDELRID is calling on owners of TREEREX tree care harnesses to retrofit the harness buckles with an additional component.

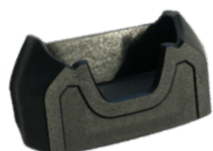
On June 23, 2021, EDELRID reported about irregularities with the Triple Lock buckles on the TREEREX tree care harness.

Since mid-2020, EDELRID has been advised about individual TREEREX harnesses where the casing for the TL buckle had become loose or detached itself fully. The cause of the problem was tolerances in the plastic and the casing riveting combined with the exceptional loads associated with rope climbing technique/tree care. However, the buckle's „three-way operation“ means that any application risk could be excluded.

[Read the complete statement from June 23, 2021](#)

The technical retrofitting solution mentioned in this article is now available.

This solution is an additional component, a sleeve made of fiberglass reinforced polyamide, which is clicked over the buckle and thus ensures the buckle casing has additional fixing. The buckle's functionality is not affected by the sleeve.



28mm-Sleeve



28mm-Sleeve with buckle

In order to avoid further complaints and problems in use, EDELRID is calling on all owners of TREEREX harnesses to order these retrofit sleeves free of charge through service@edelrid.de specifying the required number (3 pieces per harness) and a delivery address. The sleeves are easy to retrofit by any user.

Read the installation instructions:

